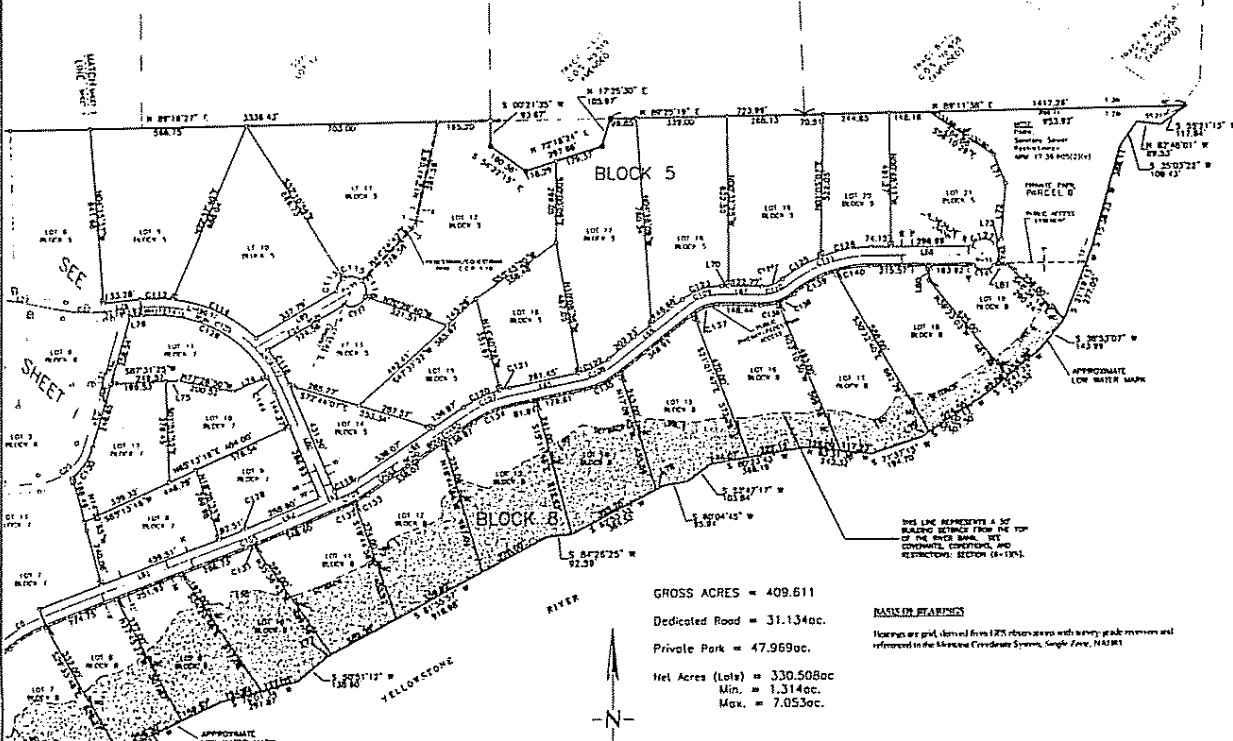


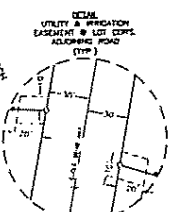
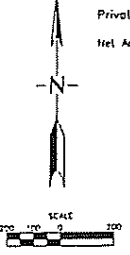
PLAT OF EAGLE BEND OF THE YELLOWSTONE

LOCATED IN SECTION 1, T.2N., R.27E., P.M.M. AND SECTION 6,
T.2N., R.28E., P.M.M., YELLOWSTONE COUNTY, MONTANA
MAY, 2002



GROSS ACRES = 409.611
Dedicated Road = 31.134ac.
Private Park = 47.969ac.
Net Acres (lots) = 330.508ac
Min. = 1.314ac.
Max. = 7.053ac.

BASELINE BEARINGS
Bearings are given, derived from GPS observations with survey grade precision and referenced to the Montana Coordinate System, Single Zone, NAD83.



OWNER
Eagle Bend of the Yellowstone LLC
Ward Farnon and Mary Alice Farnon
DEVELOPERS
Eagle Bend of the Yellowstone LLC

CURVE TABLE				CURVE TABLE			
CURVE	RADIUS	DELTA	LENGTH	CURVE	RADIUS	DELTA	LENGTH
C01	100.00	180.00	314.16	C13	100.00	180.00	314.16
C02	100.00	180.00	314.16	C14	100.00	180.00	314.16
C03	100.00	180.00	314.16	C15	100.00	180.00	314.16
C04	100.00	180.00	314.16	C16	100.00	180.00	314.16
C05	100.00	180.00	314.16	C17	100.00	180.00	314.16
C06	100.00	180.00	314.16	C18	100.00	180.00	314.16
C07	100.00	180.00	314.16	C19	100.00	180.00	314.16
C08	100.00	180.00	314.16	C20	100.00	180.00	314.16
C09	100.00	180.00	314.16	C21	100.00	180.00	314.16
C10	100.00	180.00	314.16	C22	100.00	180.00	314.16
C11	100.00	180.00	314.16	C23	100.00	180.00	314.16
C12	100.00	180.00	314.16	C24	100.00	180.00	314.16

LINE TABLE			LINE TABLE		
LINE	BEARING	DISTANCE	LINE	BEARING	DISTANCE
L01	N 89°18'21" E	334.75	L13	S 89°18'21" W	334.75
L02	N 89°18'21" E	334.75	L14	S 89°18'21" W	334.75
L03	N 89°18'21" E	334.75	L15	S 89°18'21" W	334.75
L04	N 89°18'21" E	334.75	L16	S 89°18'21" W	334.75
L05	N 89°18'21" E	334.75	L17	S 89°18'21" W	334.75
L06	N 89°18'21" E	334.75	L18	S 89°18'21" W	334.75
L07	N 89°18'21" E	334.75	L19	S 89°18'21" W	334.75
L08	N 89°18'21" E	334.75	L20	S 89°18'21" W	334.75
L09	N 89°18'21" E	334.75	L21	S 89°18'21" W	334.75
L10	N 89°18'21" E	334.75	L22	S 89°18'21" W	334.75
L11	N 89°18'21" E	334.75	L23	S 89°18'21" W	334.75
L12	N 89°18'21" E	334.75	L24	S 89°18'21" W	334.75

LOT	BLK	ACRES	OWNER	BLK	ACRES	OWNER	
LOT 1	BLK 5	1.314	Ward Farnon and Mary Alice Farnon	LOT 1	BLK 6	1.314	Ward Farnon and Mary Alice Farnon
LOT 2	BLK 5	1.314	Ward Farnon and Mary Alice Farnon	LOT 2	BLK 6	1.314	Ward Farnon and Mary Alice Farnon
LOT 3	BLK 5	1.314	Ward Farnon and Mary Alice Farnon	LOT 3	BLK 6	1.314	Ward Farnon and Mary Alice Farnon
LOT 4	BLK 5	1.314	Ward Farnon and Mary Alice Farnon	LOT 4	BLK 6	1.314	Ward Farnon and Mary Alice Farnon
LOT 5	BLK 5	1.314	Ward Farnon and Mary Alice Farnon	LOT 5	BLK 6	1.314	Ward Farnon and Mary Alice Farnon
LOT 6	BLK 5	1.314	Ward Farnon and Mary Alice Farnon	LOT 6	BLK 6	1.314	Ward Farnon and Mary Alice Farnon
LOT 7	BLK 5	1.314	Ward Farnon and Mary Alice Farnon	LOT 7	BLK 6	1.314	Ward Farnon and Mary Alice Farnon
LOT 8	BLK 5	1.314	Ward Farnon and Mary Alice Farnon	LOT 8	BLK 6	1.314	Ward Farnon and Mary Alice Farnon
LOT 9	BLK 5	1.314	Ward Farnon and Mary Alice Farnon	LOT 9	BLK 6	1.314	Ward Farnon and Mary Alice Farnon
LOT 10	BLK 5	1.314	Ward Farnon and Mary Alice Farnon	LOT 10	BLK 6	1.314	Ward Farnon and Mary Alice Farnon

THIS PLAT IS FURNISHED SOLELY FOR THE PURPOSE
 OF ASSISTING IN LOCATION IMPROVEMENTS.
 STEWART TITLE OF BILLINGS, LLC AND ITS
 UNDERWRITER ASSUMES NO LIABILITY FOR
 VARIATIONS, IF ANY, IN DIMENSIONS AND LOCATION
 ASCERTAINED BY AN ACCURATE SURVEY.

**MORRISON
MAIERLE, Inc.**

PROJECT NO. 2002010000-0020

FIELD WORK: ENR, MIA
DRAWN BY: ECL/ST
CHECKED BY: ECL/ST

DATE: MAY 2002
SCALE: 1" = 200'

YELLOWSTONE COUNTY
SHEET: 1 OF 1

PLAT NO.
EAGLE BEND OF THE YELLOWSTONE

SECTION
1

RANGE
27E

TOWNSHIP
2N

COUNTY
YELLOWSTONE

3226615